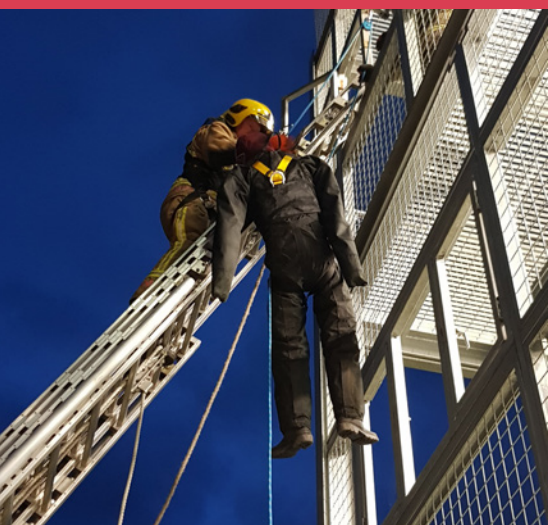


RUTH LEE



FOR PROFESSIONALS WHO SAVE LIVES

TRAINING MANIKINS FOR FIRE & RESCUE SERVICES



FIRE & RESCUE SERVICES FOR PROFESSIONALS WHO SAVE LIVES

Ruth Lee manikins are used throughout the world by fire and rescue professionals. They are tough enough for the fire service and military, and are weighted proportionately to be anatomically correct, for more realistic training.

We are confident you won't find a more durable manikin on the market and with a full range of dummies, designed for different training scenarios, we are sure we can provide you with the perfect training partner!



DUTY RANGE

Our best selling manikin and commonly known as the "Drill Dummy". It is ideal for a range of training scenarios including: Confined Space, Urban Search and Rescue (USAR), Road Traffic Collision (RTC), CBRN and general handling exercises.

| CODE | DESCRIPTION | WEIGHT | HEIGHT | NATO STOCK NO |
|-------|-------------|--------|--------|-----------------|
| RLN5 | BABY | 5 Kg | 0.7m | 4240-99-8581987 |
| RLN10 | TODDLER | 10Kg | 0.9m | 4240-99-0218800 |
| RLN20 | YOUTH | 20Kg | 1.3m | 4240-99-2130513 |
| RLN30 | 30Kg ADULT | 30Kg | 1.8m | 4240-99-5158249 |
| RLN50 | 50Kg ADULT | 50Kg | 1.8m | 4240-99-5550594 |
| RLN70 | 70Kg ADULT | 70Kg | 1.8m | 4240-99-2416796 |
| RLN90 | 90Kg ADULT | 90Kg | 1.8m | NA |



FIRE HOUSE

This manikin is ideal for snatch rescue training and 'hot cell' training. Will withstand temperatures of around 160C at floor level (400C at ceiling).

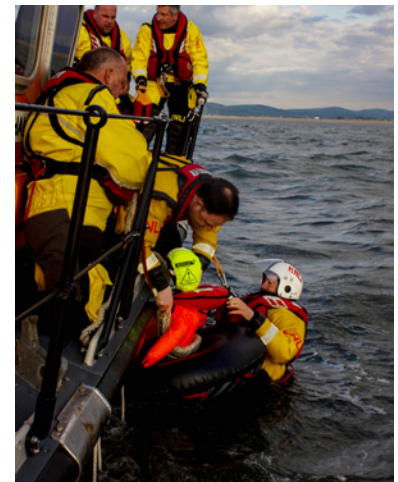
| CODE | DESCRIPTION | WEIGHT | HEIGHT | NATO STOCK NO |
|---------|-------------|--------|--------|-----------------|
| RLNFH10 | TODDLER | 10Kg | 0.9m | NA |
| RLNFH20 | YOUTH | 20Kg | 1.3m | NA |
| RLNFH30 | 30Kg ADULT | 30Kg | 1.8m | 4240-99-5158249 |
| RLNFH50 | 50Kg ADULT | 50Kg | 1.8m | 4240-99-5550594 |
| RLNFH70 | 70Kg ADULT | 70Kg | 1.8m | NA |



MAN OVERBOARD

It is vital that effective MOB drills are conducted frequently with crew members on all vessels - these manikins have proven to be a vital tool in achieving that. This manikin can float at any angle between the vertical and horizontal by simply moving the foam pieces between the chest pockets and the legs, a process which takes seconds.

| CODE | DESCRIPTION | WEIGHT | HEIGHT | NATO STOCK NO |
|----------|-------------|--------|--------|-----------------|
| RLNW20MO | YOUTH | 20Kg | 1.3m | NA |
| RLNWMO | ADULT | 40Kg | 1.8m | 0472-99-7837372 |



FULL BODIED AIRWAY MANAGEMENT

Your team will be expected to carry our airway management skills in some difficult circumstances - not a warm, well-lit classroom! Introducing this manikin into your routine training will allow you to create more realistic scenarios and ensure your team are resilient.

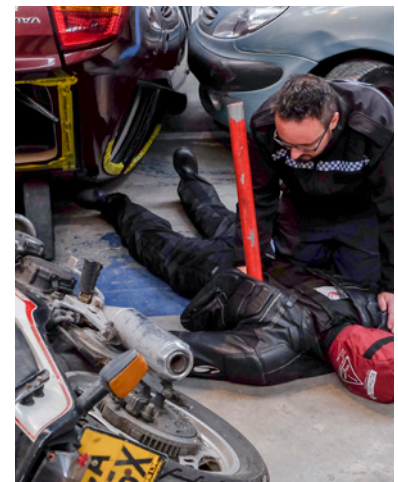
| CODE | DESCRIPTION | WEIGHT | HEIGHT |
|-------------|--------------------------|--------|--------|
| RLNAWM | 20KG ADULT WITHOUT TORSO | 13Kg | 1.8m |
| RLNAWMTOR | 20KG ADULT WITH TORSO | 20Kg | 1.8m |
| RLNAWM50 | 50KG ADULT WITHOUT TORSO | 43Kg | 1.8m |
| RLNAWMTOR50 | 50KG ADULT WITH TORSO | 50Kg | 1.8m |



MULTI TRAUMA

One of our more interesting manikins that can be used to simulate impalements or a partial or total loss of limb. It is an excellent choice for USAR or RTC (Road Traffic Collision) training and helps to promote proper casualty care -after all, if you handle him incorrectly, he could lose an arm!

| CODE | DESCRIPTION | WEIGHT | HEIGHT | NATO STOCK NO |
|---------|-------------|--------|--------|-----------------|
| RLN30MT | 30Kg ADULT | 30Kg | 1.8m | 4210-99-2547551 |
| RLN50MT | 50Kg ADULT | 50Kg | 1.8m | NA |
| RLN70MT | 70Kg ADULT | 70Kg | 1.8m | NA |



WORKING AT HEIGHT

Specially designed for Working at Height training. This manikin is constructed to provide extra rigidity and reduce slumping when using a rescue harness.

| CODE | DESCRIPTION | WEIGHT | HEIGHT | NATO STOCK NO |
|---------|-------------|--------|--------|---------------|
| RLWAH30 | 30Kg ADULT | 30Kg | 1.8m | NA |
| RLWAH50 | 50Kg ADULT | 50Kg | 1.8m | NA |
| RLWAH70 | 70Kg ADULT | 70Kg | 1.8m | NA |



BARIATRIC

Obesity is a growing problem in the Western world. Would you and your team be confident in extricating a heavier casualty in an emergency? With a 'light-weight' option available when bulk and not excessive weight is required.

| CODE | DESCRIPTION | WEIGHT | HEIGHT | NATO STOCK NO |
|--------|-------------|--------|--------|---------------|
| RLN90B | 90KG ADULT | 90Kg | 1.8m | NA |
| RLN180 | 180KG ADULT | 180Kg | 1.8m | NA |
| RLN260 | 260KG ADULT | 260Kg | 1.8m | NA |



WATER-FILLABLE BARIATRIC SUIT

A NEW innovation for Bariatric training. Our Water-fillable Bariatric Suit fits over any Duty Adult manikin and allows you to add up to 150kgs of additional weight. When empty it is light enough for one person to carry easily.

| CODE | DESCRIPTION |
|-------|-------------------------------|
| RLBCS | WATER-FILLABLE BARIATRIC SUIT |



RUTH LEE LTD

London Road

Corwen

Denbighshire

LL21 0RZ

01490 413 282

mail@ruthlee.co.uk

www.ruthlee.co.uk



Edited: 11.12.17